

Low Power Gas Genset of Tellhow EST

10-550KW



ES series Gas Genset



The small power gas genset produced by Tellhow EST adopts the most mature Cummins engine in the world as the prototype. After a long-term practical application and improvement, it has innovative advantages in mechanical structure, electrical control, safety performance and other aspects. Because the engine, gas ignition and control adopt closed-loop control system, the generator set achieves high efficiency, low exhaust temperature and low emission. At present, ES series of small power gas generator sets have been widely used in the power generation market.

At present, the rated power of Tellhow EST small power gas genset can be from 19kw to 550KW. LPG and biogas can be used for all models.

ES series Gas Engine



Special cylinder head for gas engine:

After the simulation test, the design of near exhaust passage is optimized, the intake swirl shape is improved, and the cooling channel is enlarged. The valve seat ring adopts powder metallurgy process, which is more resistant to high temperature.



The piston is specially designed for gas engine, and the compression ratio is designed according to Cummins gas engine 10.5:1. The results show that the engine life is greatly increased, and the surface enhanced bowl combustion chamber can effectively prevent the thermal fatigue cracking on the top of the piston, so as to obtain higher intake turbulence, which can increase the combustion speed by more than 10%.

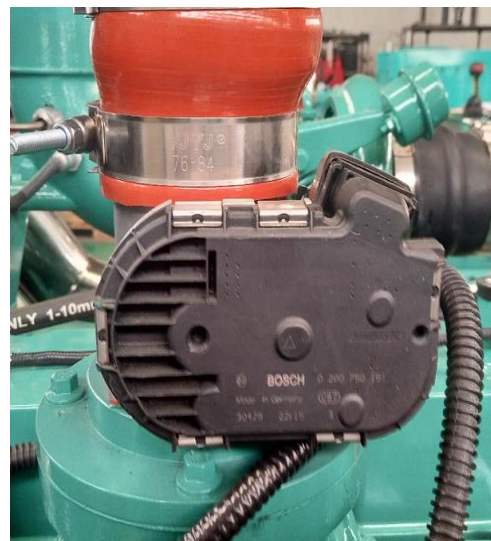


The turbocharger has been independently designed and improved. The intercooler has been added into the oil-water dual cooling channel turbocharger, so as to obtain better cooling efficiency, reduce the exhaust heat load of the engine, and significantly improve the service life of the engine.

ES series Gas Engine



The gas engine control system mainly integrates ignition control, speed control and air-fuel ratio control into an integrated ECU module. ES series gas engine adopts two-phase control ignition time, and ignition time control is more accurate and combustion is better.



Speed control mechanism of engine Bosch throttle.



The proportioning mixer of IMPCO company is used in fuel control and air-fuel mixer.



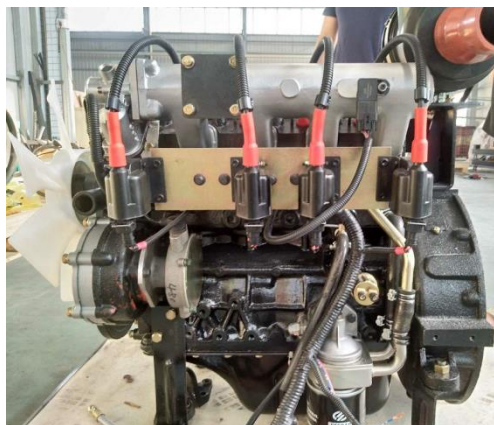
The spark plug is made of iridium produced by American champion.

ES 2.2G-G19 *Natural Gas Engine*



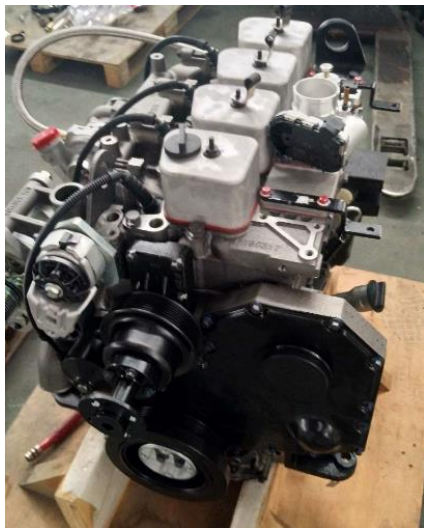
Model	ES 2.2G-G19
Rated power	19KW
Rated speed	1500 / 1800RPM
Adaptive GENSET power (natural gas)	15
Bore x stroke	110 X 117mm
Number of cylinders	2
Shape	Upright, in-line, 4-stroke
Cooling mode	Closed water cooling
Air intake mode	Inhale naturally
displacement	2.224L
Compression ratio	10.5:1
Exhaust temperature	≤500℃
Start mode	DC 12V Electric start

ES 2.8G-G42 *Natural Gas Engine*



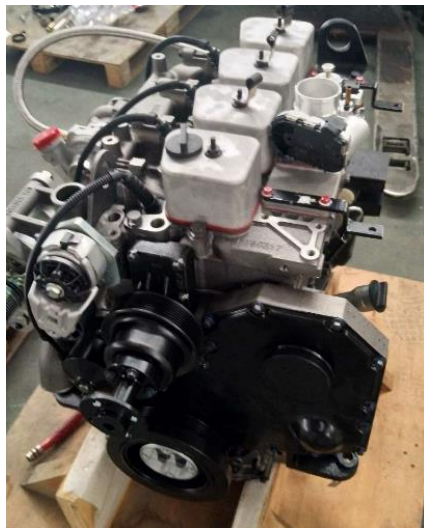
Model	ES 2.8G-G42
Rated power	42KW
Rated speed	1500 / 1800 RPM
Adaptive GENSET power (natural gas)	35KW
Bore x stroke	93 X 105 mm
Number of cylinders	4
Shape	Upright, in-line, 4-stroke
Cooling mode	Closed water cooling
Air intake mode	Pressure boost
displacement	2.853 L
Compression ratio	10.5:1
Exhaust temperature	≤630℃
Start mode	DC 24V Electric start

ES B3.9G-G38 *Natural Gas Engine*



Model	ES B3.9G-G38
Rated power	38KW
Rated speed	1500 / 1800 RPM
Adaptive GENSET power (natural gas)	30KW
Bore x stroke	102 X 120 mm
Number of cylinders	4
Shape	Upright, in-line, 4-stroke
Cooling mode	Closed water cooling
Air intake mode	Inhale naturally
displacement	3.9L
Compression ratio	10.5:1
Exhaust temperature	≤580°C
Start mode	DC 24V Electric start

ES B3.9G-G38 *Natural Gas Engine*



Model	ES B3.9G-G38
Rated power	38KW
Rated speed	1500 / 1800 RPM
Adaptive GENSET power (natural gas)	30KW
Bore x stroke	102 X 120 mm
Number of cylinders	4
Shape	Upright, in-line, 4-stroke
Cooling mode	Closed water cooling
Air intake mode	Inhale naturally
displacement	3.9L
Compression ratio	10.5:1
Exhaust temperature	≤580°C
Start mode	DC 24V Electric start

ES B5.9G-G60 *Natural Gas Engine*



Model	ES B5.9G-G60
Rated power	60KW
Rated speed	1500 / 1800 RPM
Adaptive GENSET power (natural gas)	50KW
Bore x stroke	102 X 120 mm
Number of cylinders	6
Shape	Upright, in-line, 4-stroke
Cooling mode	Closed water cooling
Air intake mode	Inhale naturally
displacement	5.9L
Compression ratio	10.5:1
Exhaust temperature	≤580°C
Start mode	DC 24V Electric start

ES BT5. 9G-G110 *Natural Gas Engine*



Model	ES BT5.9G-G110
Rated power	110KW
Rated speed	1500 / 1800 RPM
Adaptive GENSET power (natural gas)	90KW
Bore x stroke	102 X 120 mm
Number of cylinders	6
Shape	Upright, in-line, 4-stroke
Cooling mode	Closed water cooling
Air intake mode	Supercharging, air air intercooling
displacement	5.9L
Compression ratio	10.5:1
Exhaust temperature	≤610°C
Start mode	DC 24V Electric start

ES C8.3G-G150 *Natural Gas Engine*



Model	ES C8.3G-G150
Rated power	150KW
Rated speed	1500 / 1800 RPM
Adaptive GENSET power (natural gas)	130KW
Bore x stroke	114 X 135 mm
Number of cylinders	6
Shape	Upright, in-line, 4-stroke
Cooling mode	Closed water cooling
Air intake mode	Supercharging, air-air intercooling
displacement	8.3L
Compression ratio	10.5:1
Exhaust temperature	≤610°C
Start mode	DC 24V

ES C8. 3H-G180 *Natural Gas Engine*



Model	ES C8.3H-G180
Rated power	180KW
Rated speed	1500 / 1800 RPM
Adaptive GENSET power (natural gas)	160KW
Bore x stroke	114 X 145 mm
Number of cylinders	6
Shape	Upright, in-line, 4-stroke
Cooling mode	Closed water cooling
Air intake mode	Supercharging, air-air intercooling
displacement	8.3L
Compression ratio	10.5:1
Exhaust temperature	≤610°C
Start mode	DC 24V Electric start

ES L8.9G-G200 *Natural Gas Engine*



Model	ES L8.9G-G200
Rated power	200KW
Rated speed	1500 / 1800 RPM
Adaptive GENSET power (natural gas)	180KW
Bore x stroke	114 X 145 mm
Number of cylinders	6
Shape	Upright, in-line, 4-stroke
Cooling mode	Closed water cooling
Air intake mode	Supercharging, air-air intercooling
displacement	8.9L
Compression ratio	10.5:1
Exhaust temperature	≤610°C
Start mode	DC 24V Electric start

ES L9.5G-G220 *Natural Gas Engine*



Model	ES L9.5G-G220
Rated power	220KW
Rated speed	1500 / 1800 RPM
Adaptive GENSET power (natural gas)	200KW
Bore x stroke	116.5 X 148 mm
Number of cylinders	6
Shape	Upright, in-line, 4-stroke
Cooling mode	Closed water cooling
Air intake mode	Supercharging, air-air intercooling
displacement	9.5L
Compression ratio	10.5:1
Exhaust temperature	≤610°C
Start mode	DC 24V Electric start

ES NT855G-G240 *Natural Gas Engine*



Model	ES NT855G-G240
Rated power	240KW
Rated speed	1500 / 1800 RPM
Adaptive GENSET power (natural gas)	220KW
Bore x stroke	140 X 152 mm
Number of cylinders	6
Shape	Upright, in-line, 4-stroke
Cooling mode	Closed water cooling
Air intake mode	Supercharging, air-air intercooling
displacement	14L
Compression ratio	11:1
Exhaust temperature	≤580°C
Start mode	DC 24V Electric start

ES K19G-G330 *Natural Gas Engine*



Model	ES K19G-G330
Rated power	330KW
Rated speed	1500 / 1800 RPM
Adaptive GENSET power (natural gas)	300KW
Bore x stroke	159 X 159 mm
Number of cylinders	6
Shape	Upright, in-line, 4-stroke
Cooling mode	Closed water cooling
Air intake mode	Supercharging, air-air intercooling
displacement	18.9L
Compression ratio	11:1
Exhaust temperature	≤580°C
Start mode	DC 24V Electric start

ES K38G-G550 *Natural Gas Engine*



Model	ES K38G-G550
Rated power	550KW
Rated speed	1500 / 1800 RPM
Adaptive GENSET power (natural gas)	500KW
Bore x stroke	159 X 159 mm
Number of cylinders	12
Shape	V-shape, 60 degree, 4-stroke
Cooling mode	Closed water cooling
Air intake mode	Supercharging, air-air intercooling
displacement	37.7L
Compression ratio	11:1
Exhaust temperature	≤580°C
Start mode	DC 24V Electric start

Company vision

We hope and work hard to make our products contribute to China's goal of "carbon neutral, carbon peak" as soon as possible. In order to show that we are a responsible company, we must shoulder a mission: "give priority to the use of advanced technology, products and services, so as to improve the customer experience.". We hope that our small power gas generator sets can provide customers with more competitive procurement costs under the same excellent quality.





THANK YOU !

Energy solutions experts around you, Tellhow EST

www.tellhowest.com

Follow us and learn more

